

Cf CHILLER

**CHILLERS – HEAT PUMPS
PRODUCTION – RENTAL – MAINTENANCE**

TECNOLOGIA
MADE IN ITALY



COMPANY

CF CHILLER was born in 2010 thanks to a consolidated experience in industrial refrigeration and air-conditioning sectors.

In recent years the Company has specialized in the production of a wide variety of chillers and heat pumps for industrial use, of different powers and technical solutions, offering **high-quality products** not only in Italy, but also abroad, establishing strong relationships between people and long-lasting collaborations around the world.

CF products are **versatile, efficient** and, above all, **reliable**, in order to best respond to the different needs of our customers. The CF range is suitable for a various number of applications thanks to the extended working range achieved by our chillers, both in terms of water temperature and ambient temperature.



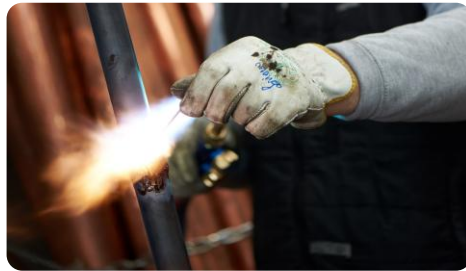


We offer a wide range of products equipped with high-quality components to guarantee **reliability** in the various industrial processes.

All CF units are produced, built and tested **in Italy** in our factory in Maserà di Padova (Veneto).

The versatility of CF CHILLER products is demonstrated by the fact that 90% of our customers' requests are satisfied by the units that are managed in stock, without the need to modify or add options.

Although we focus on warehouse-managed units to ensure faster delivery, our sales team is always ready to accommodate **customized requests for particular projects** thanks to the support of the technical department.



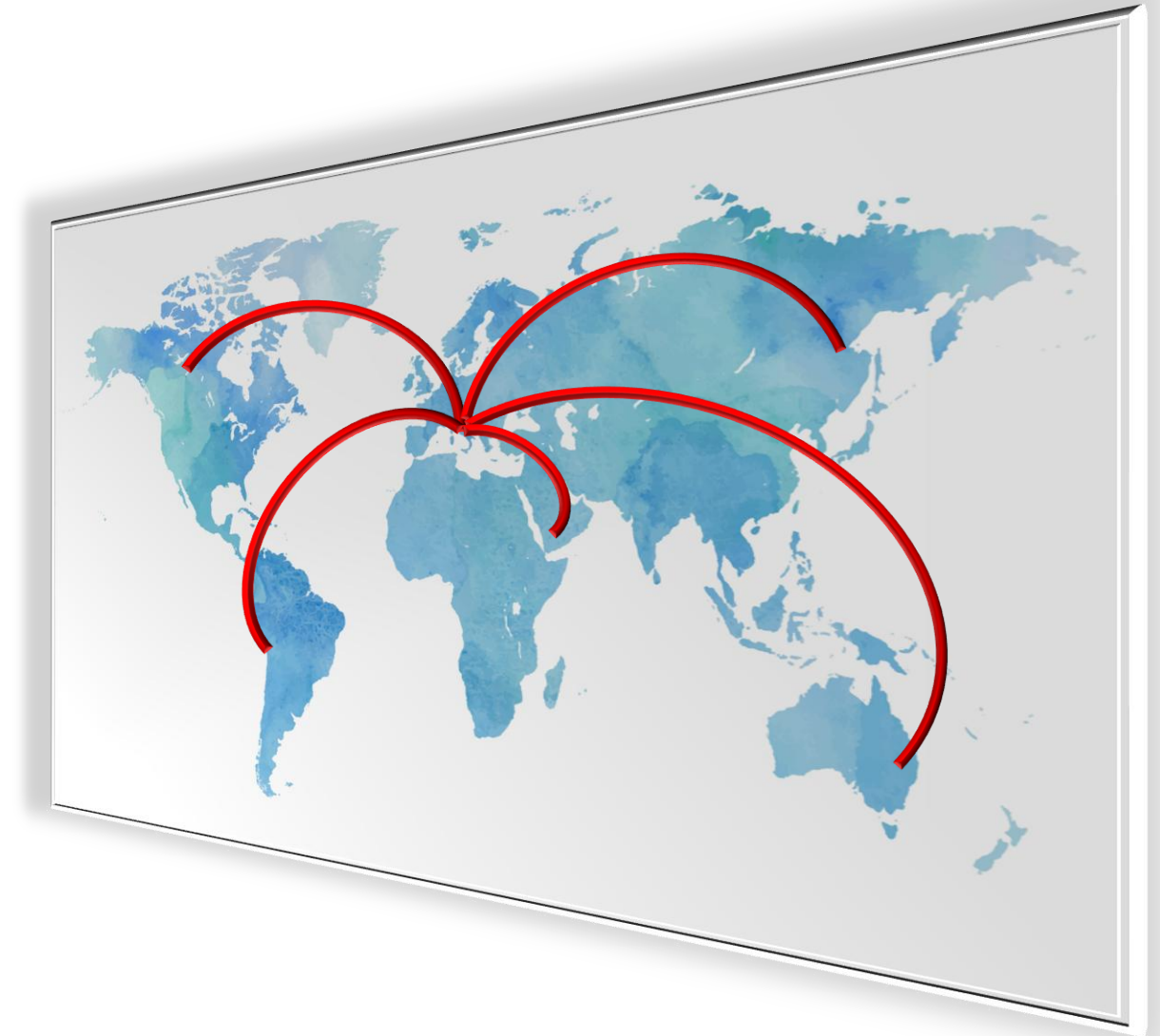
COMPANY

CF CHILLER has a very large of experience with different types of customers, meeting different needs. But, the common thread is **HIGH-QUALITY** products.

In Italy, we work directly with industries, OEM, designers, installers and retailers.

Abroad, we work with distributors, which take care of:

- Sales of CF products
- After-sales service
- Fair and seminars promotion
- Support of any potential business development



The relation among people is the core of the business.

SYSTEMS APPLICATIONS



WINERY



BREWERY



PLASTICS



AUTOMOTIVE



PACKAGING



MEDICINE
CHEMICALS



OIL&GAS



PAPER

SERVICES & ASSISTANCE

CHILLERS WITH HIRE CONFIGURATION

CF CHILLER has a large fleet of chillers available for **rental**.

These products are equipped with a reinforced structure, to cope with frequent handling and movement, and options to tackle any type of project.

The chillers and heat pumps available for the rental service are products designed and built within the CF factory, which guarantees **reliability** and **high-performance quality** that distinguishes us, thanks to our in-depth knowledge of the product.

Many more services..



Remote service support



Spare parts availability



Remote WEB service via laptop or App



PRODUCT RANGE

CF CHILLER offers to its customers a wide range of solutions, in order to meet the needs of the project.

In particular,



air-cooled water chillers



water-cooled water chillers



air-cooled heat pumps



water-cooled heat pumps



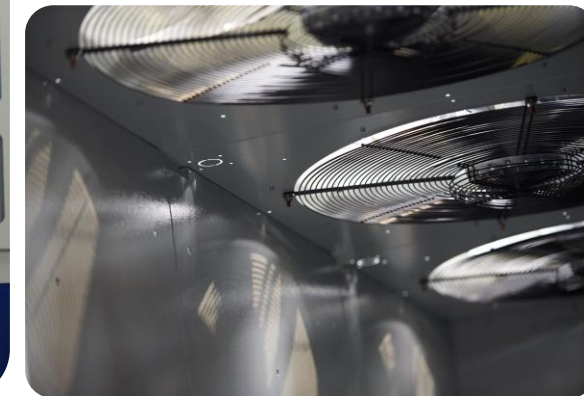
dry-coolers

remote condensers



brine chillers

refrigeration units



PRODUCTS OVERVIEW



Air-cooled chillers

PISTON/ ROTARY/SCROLL



ZME

Cooling capacity: 1 - 3 kW



ZCM

Cooling capacity: 1,5 - 7 kW



ZCE

Cooling capacity: 5 - 20 kW

SCROLL



ZCF

Cooling capacity: 5 - 422 kW



ZCX

Cooling capacity: 5 - 420 kW



ZCF_MC
condensing unit

Cooling capacity: 5 - 422 kW



ZCF_FC

Cooling capacity: 5 - 872 kW



ZC410

Cooling capacity: 5 - 872 kW



ZC513

Cooling capacity: 310 - 1270 kW



ZC123

Cooling capacity: 209 - 1000 kW



ZCR32

Cooling capacity: 18 - 884 kW



ZC454

Cooling capacity: 26 - 824 kW

SCREW

PRODUCTS OVERVIEW



Water-cooled chillers



ZC410_W

Refrigerant gas R410A



ZC_ME

Condenserless chiller



ZCR32_W 

Refrigerant gas R32

 **ZC454_W**



Refrigerant gas R454B



ZC_W

With screw compressors

PRODUCTS OVERVIEW



Heat pumps



ZH

Air-cooled heat pump



ZH_W

Water-cooled heat pump



ZH410

Refrigerant gas R410A

 ZH454



Refrigerant gas R454B



ZHR32 

Refrigerant gas R32



Cooling capacity 0,95 - kW

- Gas: **R134a**
- Compressor
- Coil evaporator inside the stainless water tank
- Open manual filling system with water level indicator
- Calibrated water by-pass
- Water pump P3
- Water gauge
- Electrical plug

- ✓ **PLUG&PLAY**
- ✓ **EASY MAINTENANCE**

**ULTRA
COMPACT
DIMENSIONS**

**ZME_STD
101**

**ZME_STD
103**

Cooling capacity 1 - 6 kW

- Gas: **R134a** (ZCM 102) **R410A** (ZCM 103-107)
- Rotary compressor
- Refrigerant manometers
- Capillary small models, optional thermostatic valve
- Copper **coaxial evaporator inside water tank.**
- 25lt stainless steel water tank
- Open manual filling system with water level indicator
- Calibrated water by pass
- Electrical board with its own door (ZCM 103-107)
- Water pump P3 and gauge

- ✓ **PLUG&PLAY**
- ✓ **EASY MAINTENANCE**

ZCM_STD
102

ZCM_STD
103

ZCM_STD
105

ZCM_STD
107



ZCR32



Cooling capacity 18 – 884 kW

- Gas: **R32**
- GWP: 675
- Copeland SCROLL compressors

- ✓ **PLUG&PLAY**
- ✓ **EASY MAINTENANCE**



- AC fans
- Y water filter
- Flow switch
- Dixell control: iChill IC208CX
- RS485
- Electrical supply
400V/3pH/50Hz
- IP54 protection rate

www.chiller-frigoriferi.it



ZC454

Cooling capacity 26 – 824 kW

- Gas: **R454B**
- GWP: 466
- Bitzer SCROLL compressors



ZCF → ZC410



Cooling capacity 5 – 872 kW

- Gas: **R410A**
- GWP: 2088
- Heat plate exchanger
- Differential pressure switch
- Water filter (already installed)
- Water by-pass with valve
- Dixell microprocessor control card
- IP54 protection rate

- ✓ **PLUG&PLAY**
- ✓ **EASY MAINTENANCE**

NEW LOOK

PLUS & ADVANTAGES

COMPACT STRUCTURE
to save space

Electrical board is placed
lower, so the unit can
«breathe» better

**TOUCHSCREEN
CONTROL**

 **VENTILATION AND
GAS LEAK SENSOR**



EC FANS
to improve efficiency

**V-SHAPED
CONDENSING COILS**

EASY MAINTENANCE
each component can be easily reached

✓ FOR RANGES ZCR32, ZC454, ZC410, ZC123 with 2+ circuits

www.chiller-frigoriferi.it



NEW LOOK

PLUS & ADVANTAGES

**V-SHAPED
CONDENSING COILS**

THERMOSTATIC VALVE
electronic

WATER FILTER
for evaporator's protection
from impurities

FLOW SWITCH
to support water pump

EC FANS
to improve efficiency

EASY ACCESSIBILITY
for technical assistants

DOUBLE-SIDED CONNECTIONS
to meet system's needs



✓ FOR RANGES ZCR32, ZC454, ZC410, ZC123 with 2+ circuits

www.chiller-frigoriferi.it



Cooling capacity 310 – 1270 kW

- Gas: **R513A**
- GWP: 631



- **SCREW** compressors
- EC fans
- Flow switch

- Carel control: pCO5
- Electrical supply 400V/3pH/50Hz
- IP54 protection rate



Cooling capacity 209 – 1000 kW

- Gas: **R1234ze**
- GWP: 7

DRC

dry cooler

CRM

remote condenser



Heat-transfer unit that use air to remove excess heat into the atmosphere, equipped with fans and finned condensing coil.

Cooling capacity 50 – 500 kW

- EC fans
- Electrical panel on board
- Dixell control: iChill IC208CX
- Compact and solid structure
- P3 pump on board (option)

**BRAND
NEW
PRODUCT**

✓ **FREE COOLING OPTION**
Stand-alone configuration

SPECIAL UNITS



ZB

BRINE CHILLER
Very low temperature solutions



ZH

Heat pump
air-cooled



CFBA

Refrigeration units



CF_SKID

Hydraulic solutions
as complement to industrial cooling systems

ZCF_SP

Special refrigerators
built and designed according to customer's specifications



and more...

www.chiller-frigoriferi.it





CF Chiller Frigoriferi srl

Via Villa Albarella, 8

Maserà di Padova (PD) – Italy

info@chiller-frigoriferi.it | www.chiller-frigoriferi.it

TECNOLOGIA

MADE IN ITALY